

Inhibin β -A Polyclonal Antibody
Catalog # AP73592**Specification**

Inhibin β -A Polyclonal Antibody - Product Information

| | |
|-------------------|------------------------|
| Application | WB, IHC-P |
| Primary Accession | P08476 |
| Reactivity | Human, Mouse, Rat |
| Host | Rabbit |
| Clonality | Polyclonal |

Inhibin β -A Polyclonal Antibody - Additional Information**Gene ID** 3624**Other Names**

INHBA; Inhibin beta A chain; Activin beta-A chain; Erythroid differentiation protein; EDF

Dilution

WB~~Western Blot: 1/500 - 1/2000. IHC-p: 1/100-1/300. ELISA: 1/20000. Not yet tested in other applications.

IHC-P~~N/A

Format

Liquid in PBS containing 50% glycerol, 0.5% BSA and 0.09% (W/V) sodium azide.

Storage Conditions

-20°C

Inhibin β -A Polyclonal Antibody - Protein Information**Name** INHBA**Function**

Inhibins/activins are involved in regulating a number of diverse functions such as hypothalamic and pituitary hormone secretion, gonadal hormone secretion, germ cell development and maturation, erythroid differentiation, insulin secretion, nerve cell survival, embryonic axial development or bone growth, depending on their subunit composition.

Cellular Location

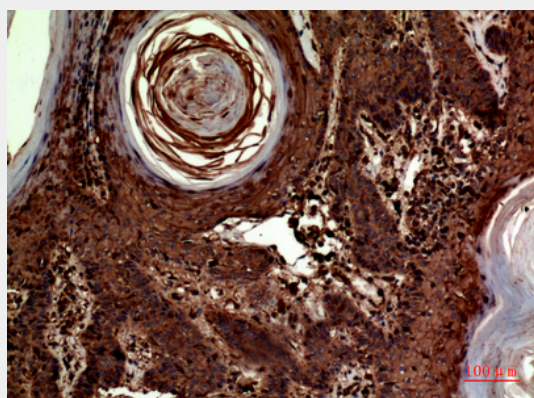
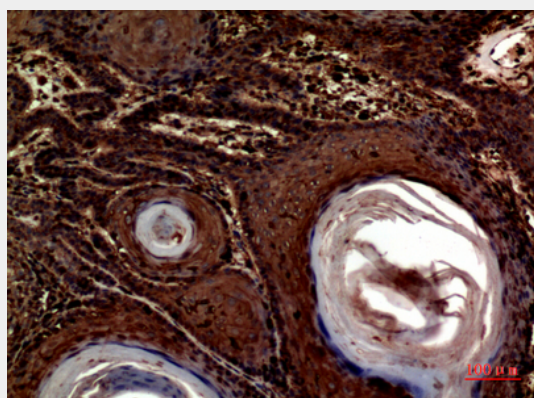
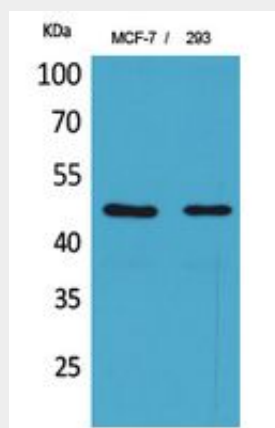
Secreted.

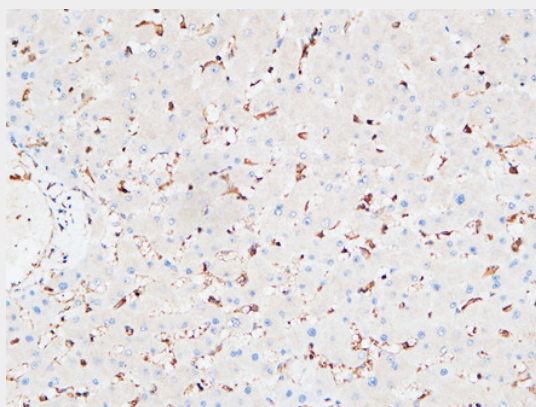
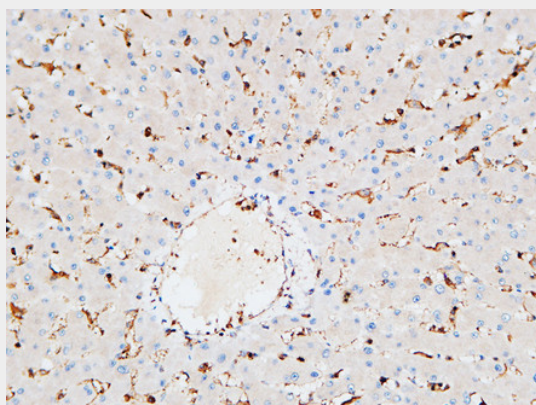
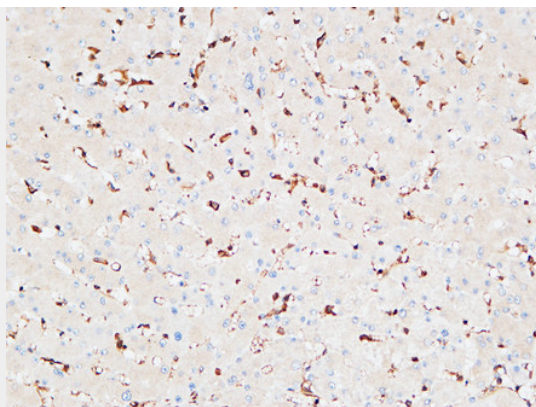
Inhibin β -A Polyclonal Antibody - Protocols

Provided below are standard protocols that you may find useful for product applications.

- [Western Blot](#)
- [Blocking Peptides](#)
- [Dot Blot](#)
- [Immunohistochemistry](#)
- [Immunofluorescence](#)
- [Immunoprecipitation](#)
- [Flow Cytometry](#)
- [Cell Culture](#)

Inhibin β -A Polyclonal Antibody - Images





Inhibin β -A Polyclonal Antibody - Background

Inhibins and activins inhibit and activate, respectively, the secretion of follitropin by the pituitary gland. Inhibins/activins are involved in regulating a number of diverse functions such as hypothalamic and pituitary hormone secretion, gonadal hormone secretion, germ cell development and maturation, erythroid differentiation, insulin secretion, nerve cell survival, embryonic axial development or bone growth, depending on their subunit composition. Inhibins appear to oppose the functions of activins.